

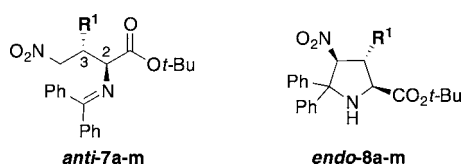
Correction to Stereodivergency in Catalytic Asymmetric Conjugate Addition Reactions of Glycine (Ket)imines

Hun Young Kim, Jian-Yuan Li, Sungkyung Kim, and Kyungsoo Oh*

J. Am. Chem. Soc. **2011**, *133*, 20750–20753. DOI: 10.1021/ja2100356

Supporting Information

Pages 20752 and 20753. In light of the stereochemical reassignment of Michael adducts¹ that our original assignment of *anti*-7 was based on, we would like to correct the absolute stereochemistry of *anti*-7 as (2*S*,3*S*), instead of (2*R*,3*R*). This will affect the absolute stereochemistry of *anti*-7a–m in Chart 3 as well as that of *endo*-8a–m in Chart 4.



The correction above does not affect the conclusion of the original article. We thank Shin-ichi Fukuzawa of Chuo University for bringing this stereochemical issue to our attention.² A corrected Supporting Information reflecting the absolute stereochemical reassignment is provided.

ASSOCIATED CONTENT

Supporting Information

Revised information reflecting the absolute stereochemical reassignment. This material is available free of charge via the Internet at <http://pubs.acs.org>.

REFERENCES

- (1) Li, Q.; Ding, C.-H.; Hou, X.-L.; Dai, L.-X. *Org. Lett.* **2012**, *14*, 4702.
- (2) Imae, K.; Konno, T.; Ogata, K.; Fukuzawa, S.-I. *Org. Lett.* **2012**, *14*, 4410–4413.